

CORPORATE DASHBOARD

REPORTS

(SCHOOLS)

2014/15 - QUARTER 2

(JULY - SEPTEMBER)

QUARTER 2 2014/15 DASHBOARD

HEADCOUNT AND FULL TIME EQUIVALENT (FTE) - SCHOOLS

TOTAL HEADCOUNT

3,645

2013/14 - Q2 **3,486** Increase of **159 people (+4.56%)** 2014/15 - Q2 **3,645**

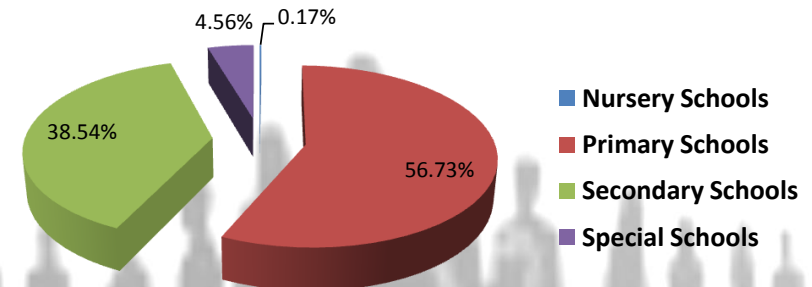
TOTAL FTE

2,478

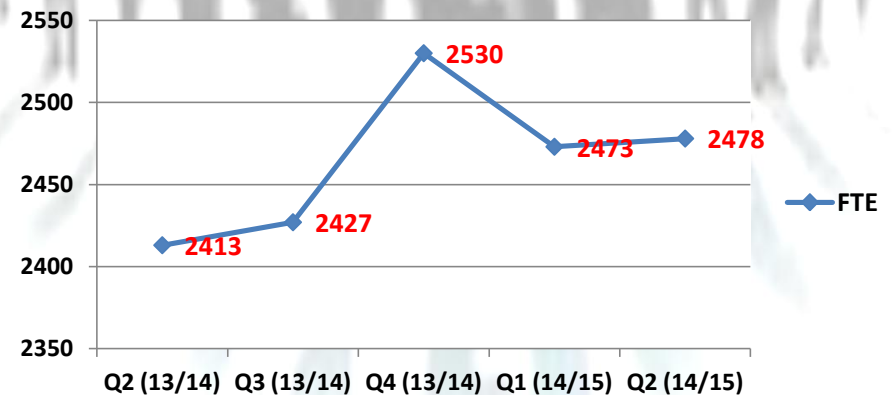
2013/14 - Q2 **2,413** Increase of **65 FTE (+2.7%)** 2014/15 - Q2 **2,478**

FTE % BY DIRECTORATE

2014/15 - Q2



TOTAL FTE Q2 TREND



QUARTER 2 2014/15 DASHBOARD

EQUALITY AND DIVERSITY - SCHOOLS

GENDER BREAKDOWN

MALE

531

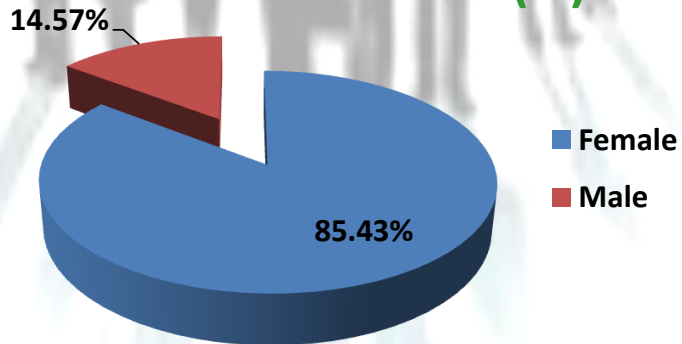
(14.57%)

FEMALE

3,114

(85.43%)

GENDER BREAKDOWN (%)



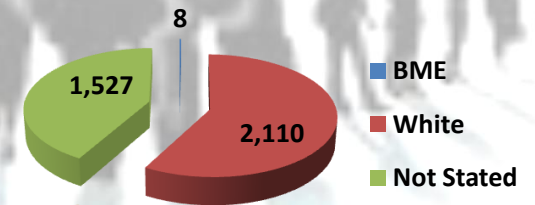
ETHNICITY

BME - 8

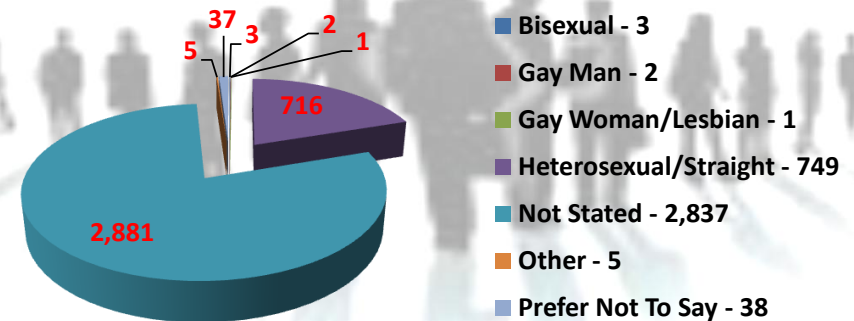
WHITE - 2,110

NOT STATED - 1,527

ETHNICITY BREAKDOWN (%)

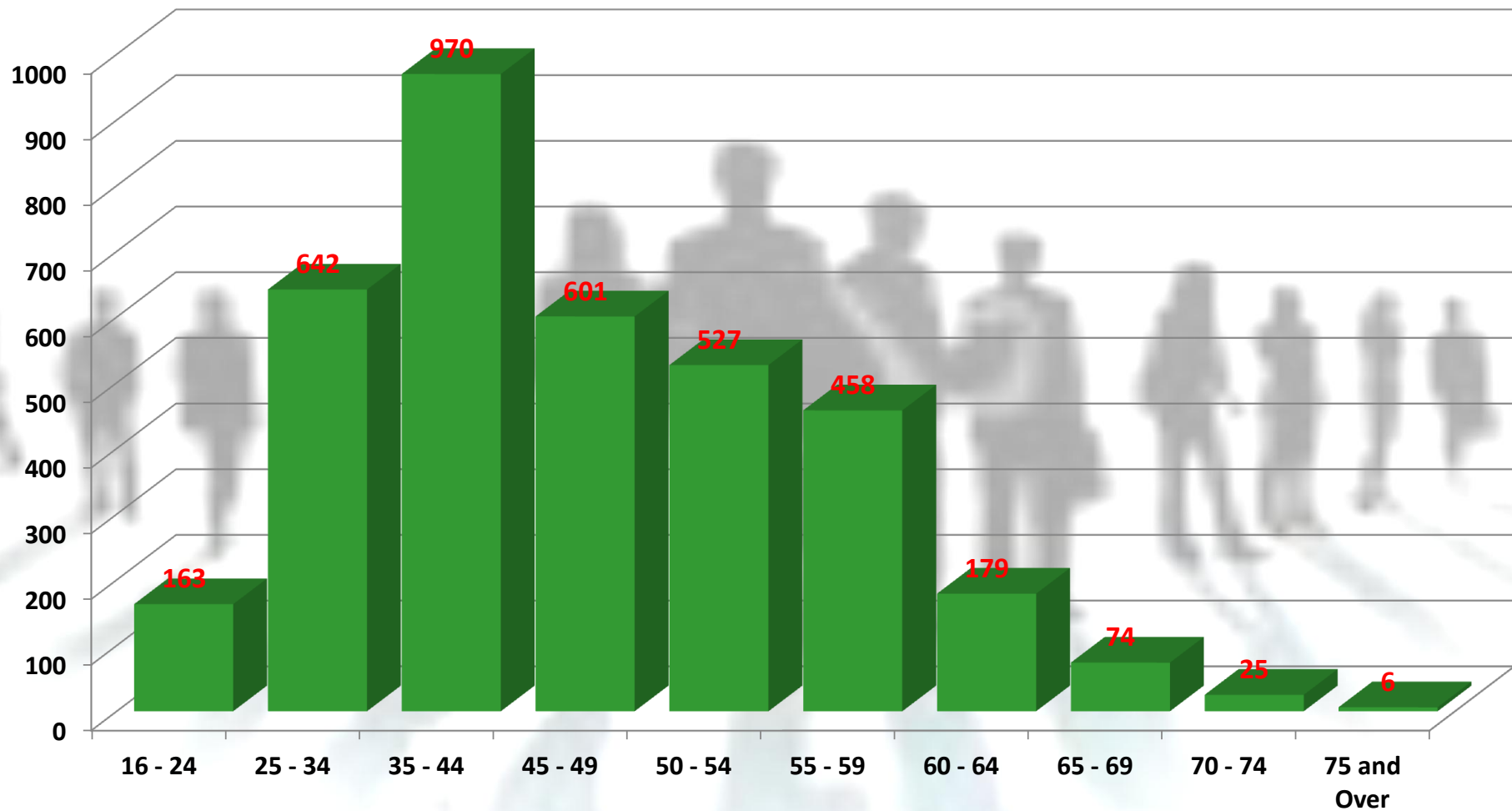


SEXUAL ORIENTATION



QUARTER 2 2014/15 DASHBOARD

AGE PROFILE - SCHOOLS



QUARTER 2 2014/15 DASHBOARD

TURNOVER AND STABILITY - SCHOOLS

LEAVERS

151

TURNOVER %

8.29%

2013/14 - Q2 8.32% Decrease of -0.03% 2014/15 - Q2 8.29%

TOP 3 REASONS

1. REDUNDANCY
2. PERSONAL REASONS/CAREER DEVELOPMENT
3. RETIREMENT

REDUNDANCY BREAKDOWN

VOLUNTARY

2

COMPULSORY

21

QUARTER 2 2014/15 DASHBOARD

ATTENDANCE - SCHOOLS

DAYS LOST PER FTE

1.25

2013/14 - Q2

1.32

Decrease of 0.07

2014/15 - Q2

1.25

ANNUAL
TARGET

9.60

ANNUAL
FORECAST

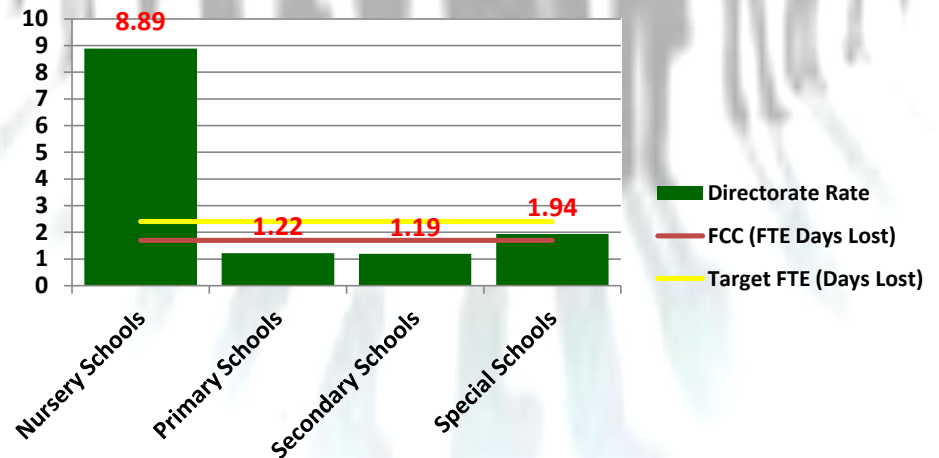
5.89

TOP 4 REASONS

1. STRESS, DEPRESSION: MENTAL HEALTH
2. MUSCULOSKELETAL
3. INFECTIONS
4. STOMACH, LIVER: VOMITING

FTE DAYS LOST BY SCHOOLS

2014/15 - Q2

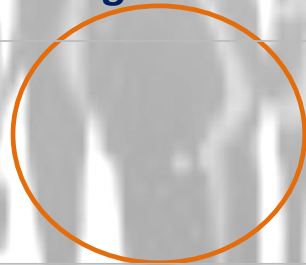


QUARTER 2 2014/15 DASHBOARD

WORKFORCE DEVELOPMENT AND PERFORMANCE - NON-SCHOOLS

DEVELOPMENT PROGRAMMES

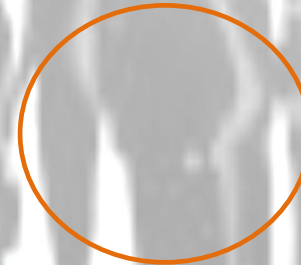
Employees on Development Programmes



**DATA TO BE PROVIDED IN
FUTURE REPORTS**

PERFORMANCE APPRAISALS

Flintshire County Council



**DATA TO BE PROVIDED IN
FUTURE REPORTS**